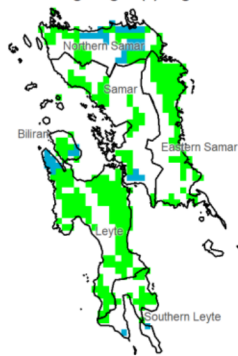
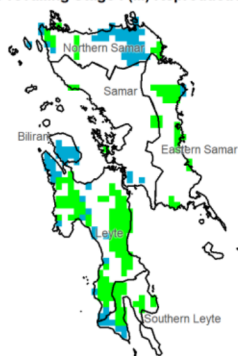


# Region VIII (Eastern Visayas)

Water Availability for Rice  
Prevailing Stage : (II) Vegetative



Water Availability for Corn  
Prevailing Stage : (III) Reproductive



Provincial Values

	Mon. Ave. Rainfall (mm)	Rice		Corn	
		CS	CCI (%)	CS	CCI (%)
Biliran	292.3	I	204.6	I	381.7
		II	191.9	II	291.6
		III	186.1	III	241.4
		IV	264.1	IV	289.0
Eastern Samar	287.9	I	159.3	I	290.9
		II	149.2	II	223.9
		III	144.5	III	185.9
		IV	206.4	IV	221.9
Leyte	266.8	I	157.3	I	296.1
		II	146.5	II	220.4
		III	141.6	III	179.7
		IV	208.5	IV	218.3
Northern Samar	346.1	I	199.6	I	388.0
		II	186.0	II	286.8
		III	179.9	III	233.1
		IV	265.2	IV	283.9
Samar	316.5	I	185.0	I	330.8
		II	174.4	II	274.9
		III	169.6	III	242.4
		IV	233.6	IV	273.2
Southern Leyte	247.4	I	155.6	I	305.9
		II	144.9	II	228.7
		III	140.0	III	187.0
		IV	204.4	IV	226.5

Crop Stage (CS) highlighted in **black** is the dominant stage during the month of June

Rice CS: (I) Nursery (II) Vegetative (III) Reproductive (IV) Ripening  
Corn CS: (I) Establishment (II) Vegetative (III) Reproductive (IV) Maturity

CCI Category: Inadequate (Yellow) Sufficient (Green) Excess (Blue)

Regional Summary

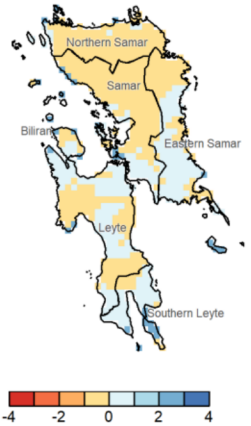
The prevailing stage of rice and corn crops during the month is the Vegetative and Reproductive stage, respectively. For rice crops, the rainfall observed during the period was sufficient to support rice crops in almost all of its cropping stages. However, for corn crops, excessive water supply was observed in some provinces, particularly in Biliran, Northern Samar, and Samar. Thus, proper drainage was advisable in those areas in preparation for the Maturity stage in the succeeding month. Meanwhile, Eastern Samar, Leyte, and Southern Leyte all receive sufficient rainfall to support corn crops in its prevailing stage.

The excessive rainfall in some areas may be attributed to low-pressure area (LPA), intertropical convergence zone (ITCZ), and localized thunderstorms that affected the region during the month. However, in most of the areas, near-normal conditions were observed (see *SPEI3 map*).

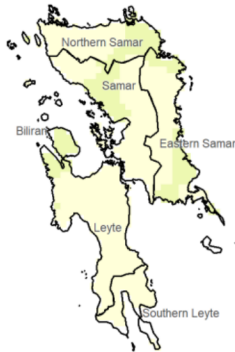
NDVI

NDVI satellite data not yet available.

SPEI3 (Apr-May-Jun)



RX1day



RX5day

